



USAID
FROM THE AMERICAN PEOPLE

 Maternal and Child
Survival Program

USAID
ASSIST PROJECT
*Applying Science to Strengthen
and Improve Systems*

Supporting the Latin America and Caribbean (LAC) KMC network through a virtual community of practice

*Dr Goldy Mazia – Newborn Health Advisor- Maternal and Child Survival Program
Dr Jorge Hermida- LAC Regional Technical Advisor – Applying Science to Strengthen and Improve Systems
(ASSIST) Project*

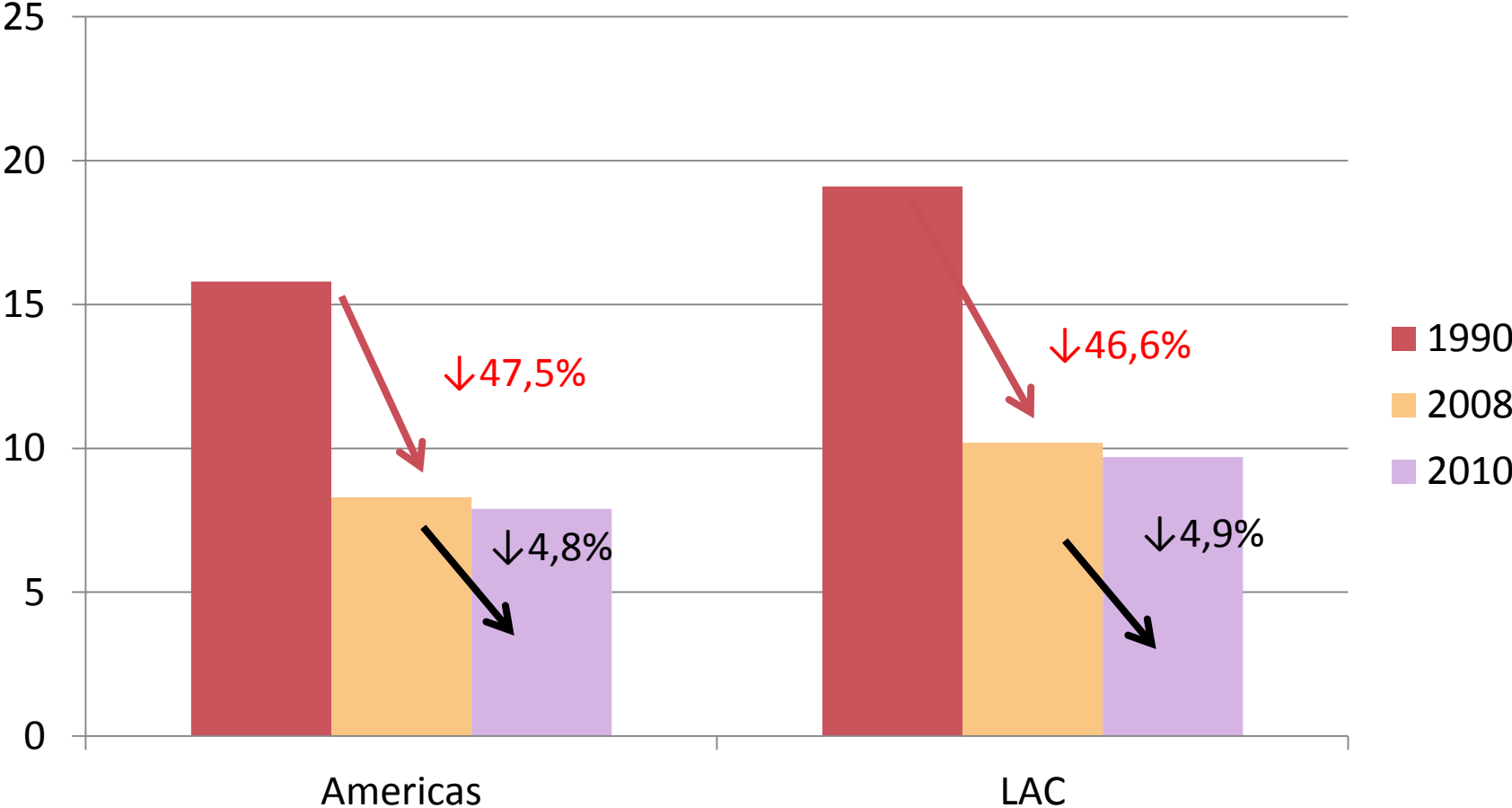
*X International Conference on Kangaroo Mother Care (KMC)
November 17--19, 2014
Kigali, Rwanda*

alianza
neonatal
alliance

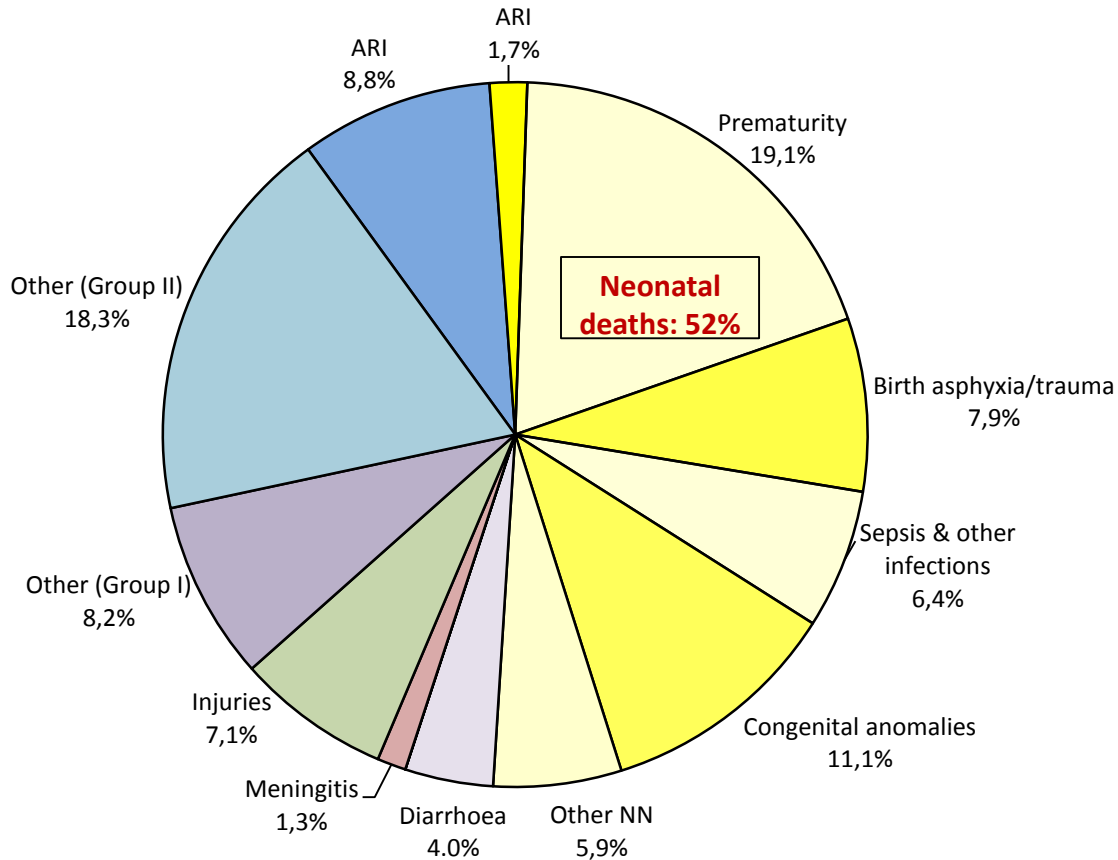
Outline

- Burden of newborn deaths from complications of prematurity in LAC
- Updates on the LAC Neonatal Alliance KMC network
- The LAC KMC virtual community of practice
- Lessons learned

NMR Trends in LAC (IHME)

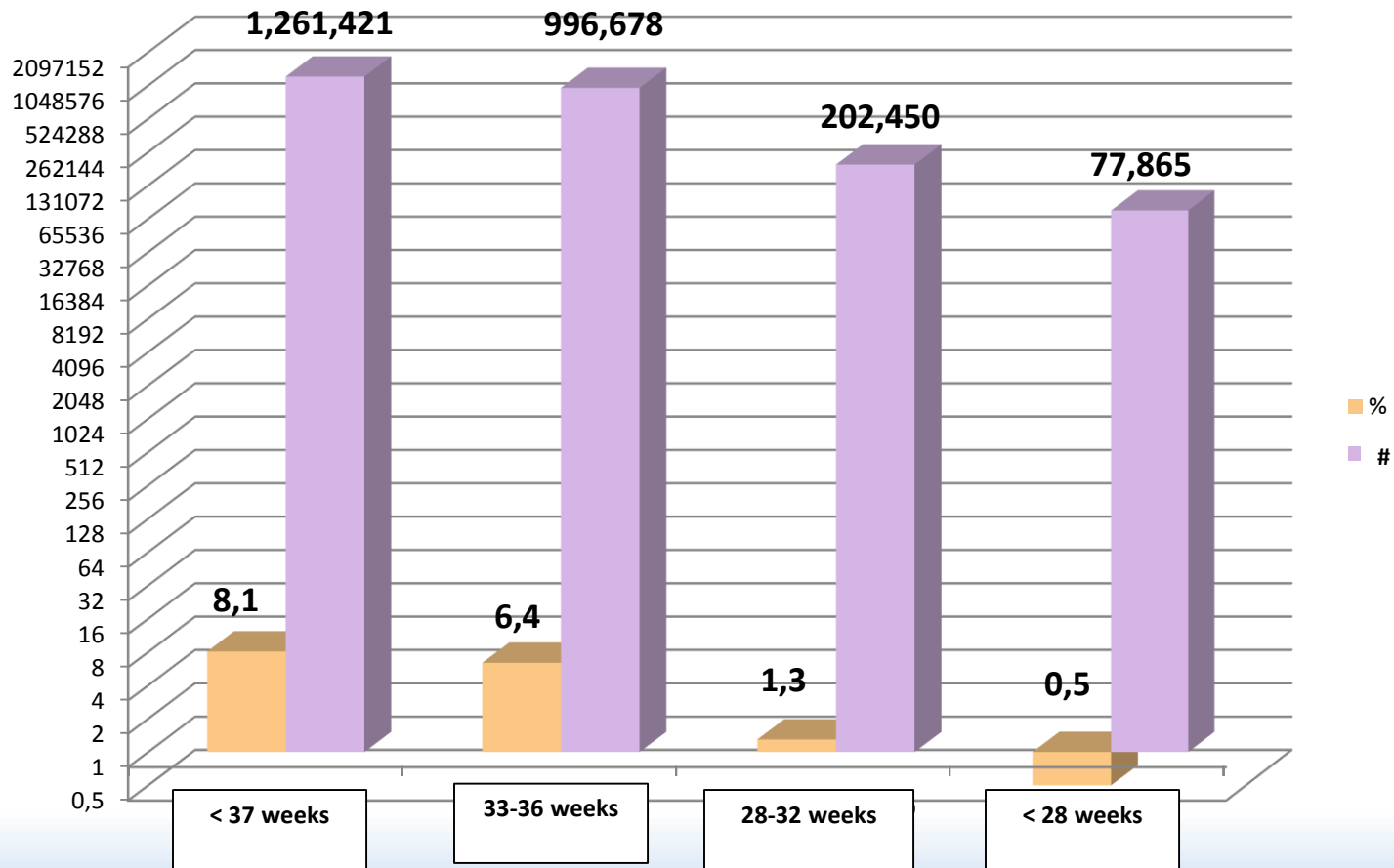


Main Causes in Children under 5 Years in LAC 2013



Source: WHO. Global Health Observatory (http://www.who.int/gho/child_health/en/index.html)

Burden of Prematurity in the LAC Region



Source: PAHO, 2013

alianza neonatal alliance



The LAC KMC network

- Created in November 2011 in the DR; supported by the LAC Neonatal Alliance
- Annual Meetings (3 carried out)
- Training and TA from Kangaroo Foundation in Bogota
- Countries in various stages of implementation: Guatemala, Nicaragua, El Salvador, Ecuador, Colombia, Paraguay, Peru, Bolivia, Dominican Republic, and Haiti
- **Virtual community of practice**
- Promoting common indicators



Haiti



Peru



Ecuador



Paraguay



El Salvador



Dominican Rep



Nicaragua



Colombia



Some Updated Country Information

| Country | National policy for KMC | # KMC facilities | # NB <2,500 g started KMC | % dissidence | % deaths | Coverage |
|--------------------|-------------------------|---|---------------------------|--------------|----------|----------------------------------|
| Haiti | No | 3 (1 MSF- 1 faith-based, 1 national university) | 468 (2011-2013) | 20-30% | <1% | ? |
| El Salvador | Yes | 3 public referral | 541 (2013) | ? | 1% | ? |
| Nicaragua | No | 1 national referral | 198 (2013) | 0% | <1% | ? |
| Paraguay | No | 6 public | 67 (2013) | 2% | 0% | 0.5% National 13% facilities |
| Peru | Yes | 7 | 1,900 (2013) | 30% | ? | ? |
| Dominican Republic | No | 5 | 4,000 (2009-2013) | 7.5-15% | 1-2.4% | 8% national Facilities 65-85% |
| Ecuador | No | 1 regional public | ? | ? | ? | ? |

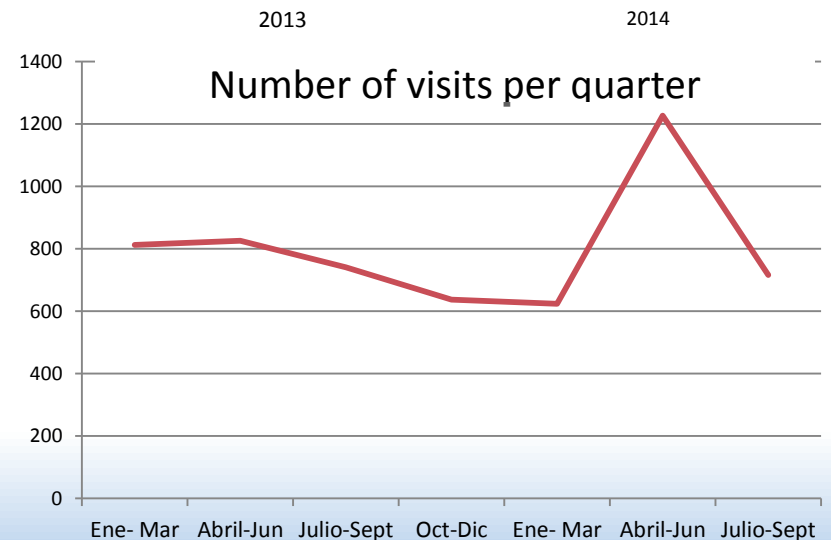
Main Continuing Challenges

- **Lack of national policies and budget for KMC**
- **Financial and human resources constraints in health services**
- **Difficulties in changing attitudes and protocols (i.e. resistance to open neonatal units)**
- **Geographic and financial constraints for families (follow-up); lack of resources for outreach**
- **Lack of culture of data collection and analysis**
- **Lack of standardized follow-up for premature babies in general (Including interventions for reduction of disabilities)**

Website www.maternoinfantil.org

- Created in June 2013
- Total number of visits to date: **663,928**
- Total number of scientific articles posted: **125**
- **270** participants from **18** countries:

Panama, Mexico, Ecuador, Honduras, Bolivia, El Salvador, Peru, Puerto Rico, Guatemala, Nicaragua, Brazil, Colombia, Honduras, Spain, Dominican Republic, Argentina, Paraguay



KMC Virtual Community of Practice activities

Forums:

- “Appropriate indicators for measuring KMC services continuing quality of care and management”
- “Experiences in start-up and early institutionalization of KMC services in LAC facilities”

Web-based seminars:

- “*Perspectives on KMC scale-up in LAC*”, Dr. Nathalie Charpak; Dr. Jorge Hermida
- “*Recent scientific evidence on outcomes/impact and global developments for KMC global scale-up*”. Dra. Goldy Mazia; Dr. Miguel Hinojosa
- “*Perspectives in newborn health in the LAC region*” Dr. Pablo Duran



2015: Web-based collaborative for QI- Prevention of hospital-acquired infections

- Virtual collaboratives: methodology to improve the quality of health care services and scale-up evidence-based best practices
- Involves QI teams from various facilities working together towards common goals for improving specific aspects of health care
- Teams share experiences in implementing improvement changes and then apply successful changes at a bigger scale
- The web-based collaborative is being implemented through the ASSIST Project www.maternoinfantil.org site using Cisco's Webex platform

Thanks for your attention

