

CLINICAL COURSE AND PROGNOSIS AT ONE YEAR OF CORRECTED AGE OF A COHORT OF 5379 COLOMBIAN LOW BIRTH WEIGHT (LBW) INFANTS DISCHARGED HOME IN KANGAROO POSITION WITH AMBULATORY OXYGEN.







	O2 depende nt	Others
Distribu- tion	N (%)	N (%)
	5379 (31%)	11625 (68%)

		O2 dependent (%)	Others (%)
Weight (grams)	<1000	10.6	1.1
	1001-1200	10.4	1.7
	1201-1500	18.3	6.3
	1501-1800	19.5	14.9
	1801-2000	13.8	18.3
	>2000	27.4	57.7
Gestational age (weeks)	<30	28.9	4.1
	31-32	21.9	9.8
	33-34	26.4	27.9
	35-36	18.6	38.8
	>37	4.3	19.5
Lubchenco	PTAEG	83.5	70.8
	PTPEG	11.9	9.1
	ATPEG	4.6	20.1

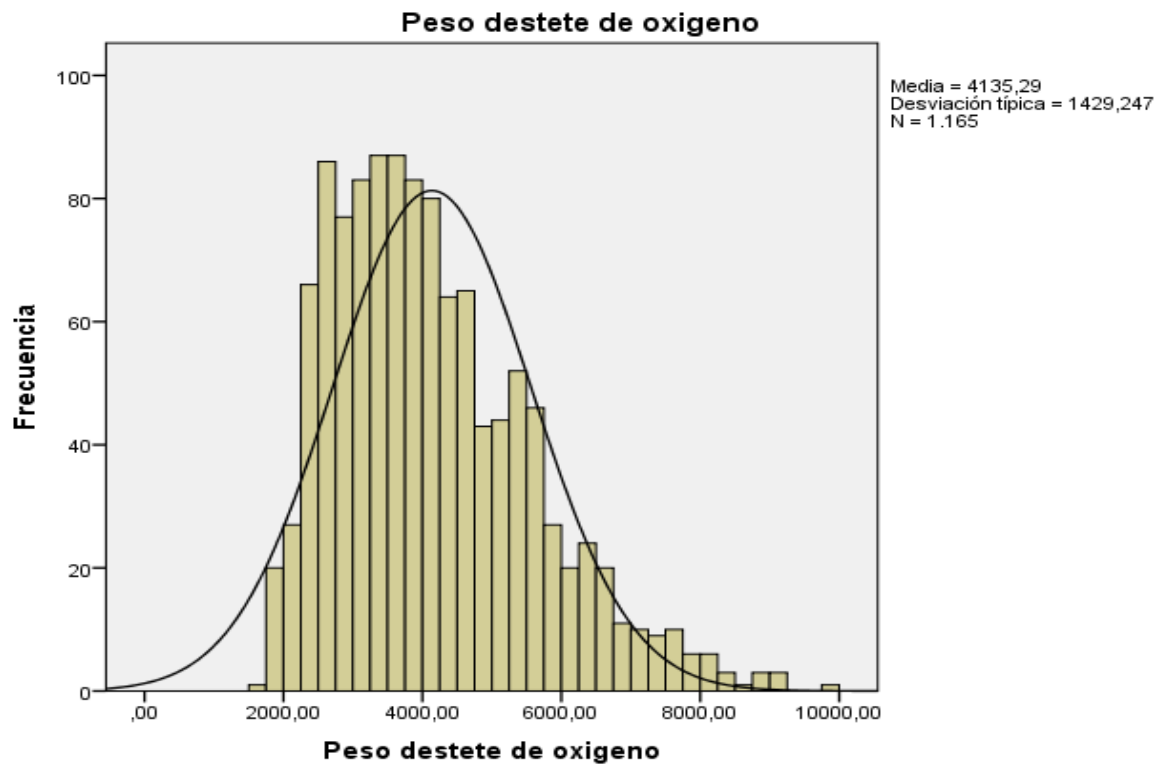
	O2 dependent (%)	Others (%)
NIQU graduates	33.2	32
Ventilatory support	27	16.5
Vent		
Vent + CPAP	57.2	32.8
CPAP	15.9	50.7
Parenteral nutrition	42.4	14.2
Number of days with AB	12.7	8.4
Suspected infection	31.3	17.1
Early neonatal infection	12.6	5.1
Late neonatal infection	5.9	1.9

NIQU graduates, 42,8% had been ventilated.

NIQU graduates had greater indices of early and late neonatal infection.

	O2 dependent (%)	Others (%)
Diagnosis of BPD	40.6	2
Nosocomial infection	17.9	4.2
Maternal death	0.1	0.3
In-Hospital stay (days)	26.2	10.5

	O2 dependent (%)	Others (%)
Intraventricular hemorrhage	11.6	2.8
Seizures	0.6	0.2
Abnormal tone	3.7	0.6
Anoxia any grade at 5'	10.6	4,1



NUTRITION

		O2 depent (%)	Others (%)
40 leks	EBF	43.9	63.4
	BF+AM	52.9	34.2
	EAM	3.2	2.4
3 months	EBF	26.1	37.9
	BF+AM	51.2	47.1
	EAM	22.7	15
12 months	EBF	4.5	6.4
	BF+AM	13.6	16.8
	EAM	81.9	76.8

SOMATIC GROWTH

		O2 dependent (%)	Others (%)
At birth	Weight	1669	2036
	Height	41.9	44.6
	HC	29.9	31.5
40 weeks	Weight	2904	2906
	Height	46.7	47
	HC	34.6	34.6
12 months	Weight	8633	8661
	Height	71.6	71.7
	HC	45.6	45.6

COMPLICATIONS AND SEQUELAE

		O2 dependent (%)	Others (%)
Ophtamol	ROP any grade	8.7	2.3
	Surgery	2.3	0.5
	Blindness	0.2	0
Optometry	Myopía	1.4	0.7
	Hypermetropía	21.7	31.4
	Hyperopic Astigmatism	47	41.7
	Myopic Astigmatism	1.5	1.1
Audiometry	Abnormal	3.3	2.7
	Normal	96.7	97.3
Neurology	Cerebral palsy at 12 months	5.1	2.6

READMISSION DURING DE FIRST YEAR (ACUMULATED)

		O2 dependent (%)	Other (%)
40 weeks	1 time	9.5	7.5
	2 times	1.4	0.9
12 months	1 time	10	10.9
	2 times	3.3	2.9
	3 times or more	2.2	1.5

READMISSION FOR ACUTE RESPIRATORY DISEASE UP TO 40 WEEKS AND UP TO THREE MONTHS OF CORRECTED AGE

		O2 dependent (%)	Others (%)
40 weeks	Respiratory infectious disease	41.3	40.6
3 months	Acute respiratory infection	51.0	51.6

MORTALITY

O2 dependent (%)

Others (%)

Alive 98.6 99.4

Time of death

Discharge-40 weeks 0.3 0.3

40 weeks-3 months 0.7 0.2

3 to 6 months 0.2 0.1

6 to 9 months 0.1 0.1

9 to 12 months 0.1 0

Place of death

Home

Hospitalization

