

National Preparedness for Scale-up of Kangaroo Mother Care in Bangladesh and Experiences at Dhaka Shishu Hospital

Altaf Hossain¹, Wahida Siraj², Rezaul Hasan², Sayed Rubayet², Azad Chowdhury³
¹ Ministry of Health ² SNL, Save the children in Bangladesh ³ Dhaka Shishu Hospital

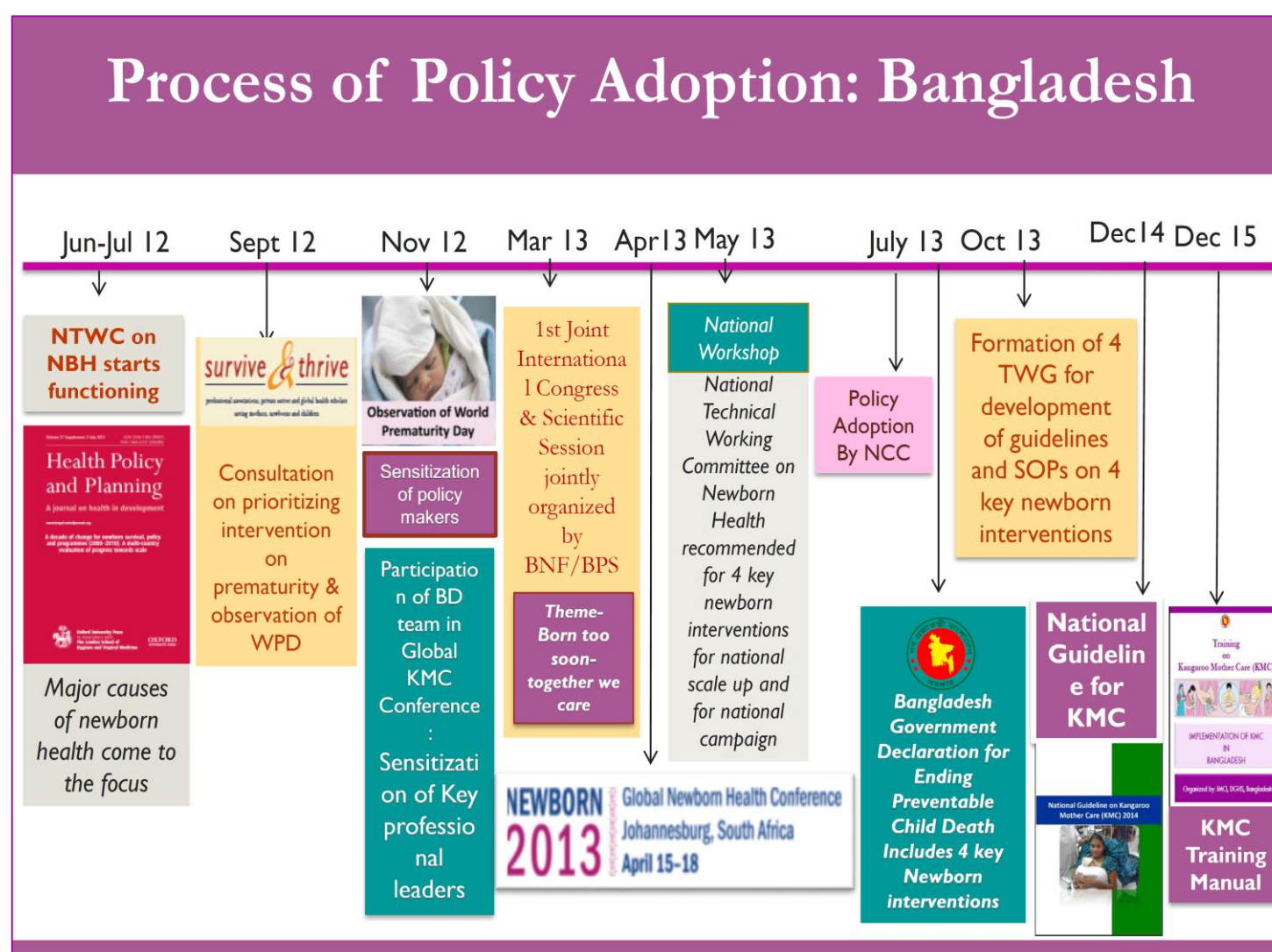
Introduction

Still, in spite of remarkable progress in reducing child mortality in Bangladesh, more than 70,000 newborns are dying each year and the leading cause of child mortality in the country is prematurity and its complications. In July 2013 Ministry of Health & Family Welfare of Peoples Republic of Bangladesh endorsed scaling-up of Kangaroo Mother Care (KMC) as one of the priority intervention to achieve its commitment for ending preventable child and newborn deaths by 2030.



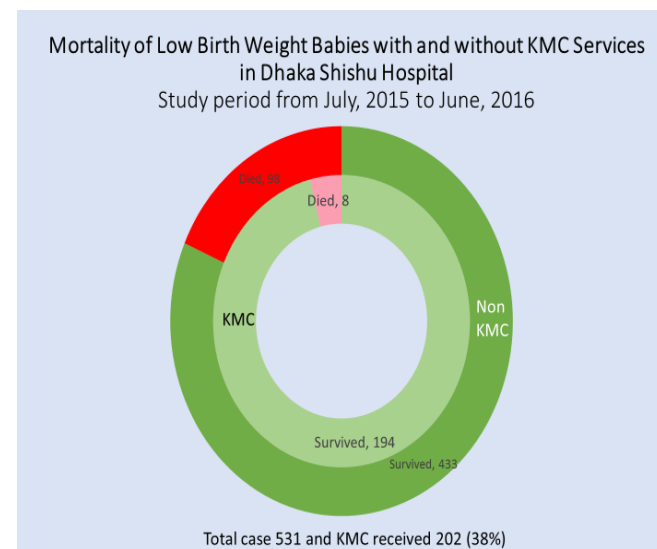
Background

In 2012 when Bangladesh had no public health facilities practicing KMC, a group of neonatologist obstetricians and public health physician participated the IX international KMC conference in Ahmedabad, India and became motivated. After the policy adoption in 2013, KMC TSC was formed by MOH's National Technical Committee on Newborn Health. The TSC received necessary technical and financial support from Saving Newborn Lives (SNL) program of Save the Children. In a meticulous approach the country starts its journey to scale-up KMC.

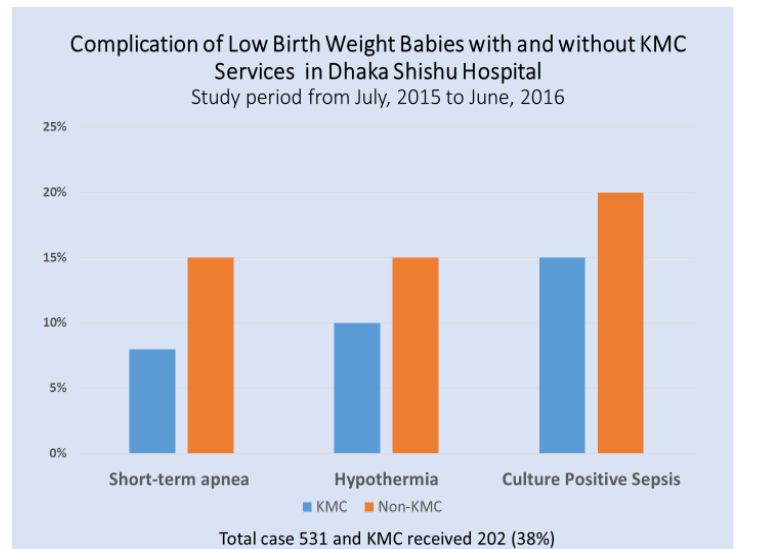


Experience of DSH

At Dhaka Shishu Hospital (DSH) KMC was initiated on July, 2013. Three trained nurses, supervised by doctors were especially engaged with KMC practice in the neonatology ward. All the babies received KMC in this facility are followed up to 40 weeks of corrected gestational age. The experience motivate the health care providers and convince the government to scale-up this simple intervention in public health facilities of Bangladesh with the necessary skills for KMC practice. This centre is now serving as the national training centre for KMC and helping national scale-up of KMC



Since July, 2013 until now, 446 babies were given KMC in Dhaka Shishu Hospital. During the study period from July, 2015 to June, 2016, total admitted LBW babies were 531. Among them 202 (38%) received KMC. Out of total 531 LBW babies, 98 (18.4%) died. But out of 202 KMC babies 8 (3.9 %) died. Comparison of 40 KMC babies with 40 control showed that rate of weight gain per day in KMC group was 18.35± 7.81 gms and in control group, it was 13.55±4.89 gms (p < 0.001). Short-term apnea occurred less in KMC group (8% vs. 15%) and episodes of hypothermia was also recorded less in KMC group (10% vs 18%). Culture positive sepsis was 15% in KMC group and 20% in control group. The mean time to achieve full enteral feed in KMC group was 9.35± 3.95 days and 14.35±6.06 days (p < 0.001) in control group .Ninety percent of KMC and 60% of control group babies were discharged with exclusive breast feeding. The rest received cup feeding along with the breast feeding.



Partners providing support to Ministry of Health for National Scale-up Preparedness

Saving Newborn Lives program of Save the Children Bangladesh, World Health Organization and UNICEF worked together with Dhaka Shishu Hospital, Bangabandhu Sheikh Mujib Medical University and key professional societies of OBGYN, and Neonatologist to support MOH for KMC scale-up preparedness.

Results

- Technical sub committee on KMC formed by National Technical Working Committee on Newborn Health with the technical and catalytic support from SNL developed the national KMC guideline, training module, Job-aids and monitoring including HMIS tools.
- Dhaka Shishu Hospital the largest Child Hospital in Bangladesh established KMC unit and start serving as KMC training facility.
- In early 2016 all the sub-district and district hospitals of a district, Kushtia established functional KMC unit with evaluation plan under CNCP Implementation.
- Since January 2016, five new national level institutes establish KMC services at their facilities following the national guideline and providing training by national training curriculum of KMC. They are Bangabandhu Shiekh Mujib Medical University, Maternal and Child Health Training Institute, Maternal and Fertility Training Center, Shaheed Suhrawardy Medical College Hospital and BIRDEM Hospital.
- The total 23 facilities starts implementing KMC in Bangladesh in this year.

